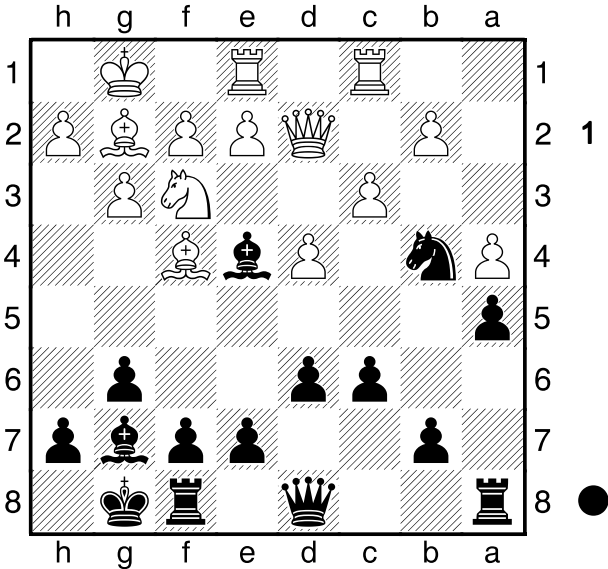


5

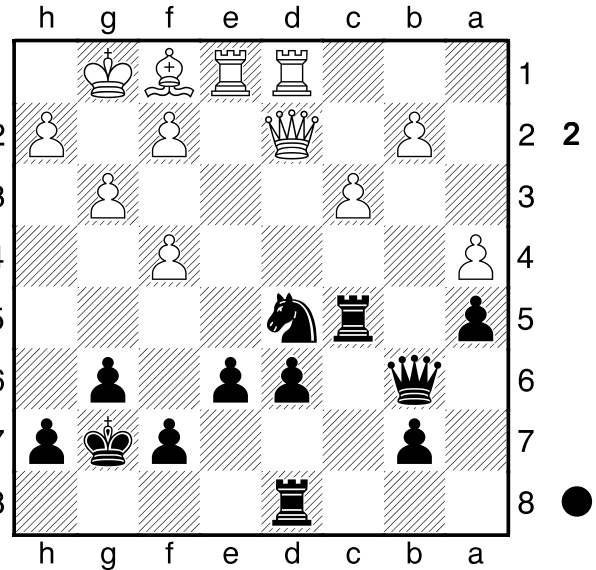
□ Epishin, Vladimir 2572
 ■ Podzielny, Karl-Heinz 2448
 Klenkes Cup Aachen 2012 rapid 24.06.2012
 [achim.relitzki@web.de]



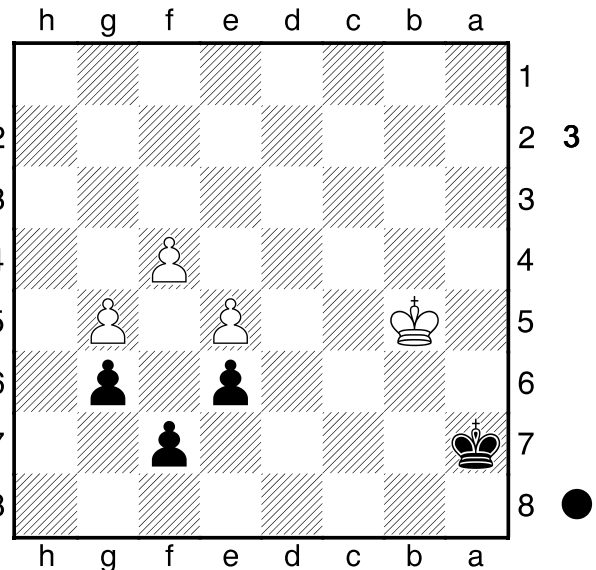
13...Sb4-d5 .. 5" 14.Lf4-h6 .. 5" Dd8-b6 .. 18"
 15.Lh6xg7 .. 1:22' Kg8xg7 .. 3"
 16.Lg2-f1 .. 2" Le4xf3 .. 11" 17.e2xf3 .. 3"
 e7-e6 .. 2" 18.Dd2-c2 .. 18" c6-c5 .. 8"
 19.Tc1-d1 .. 6" Ta8-c8 .. 8"
 20.d4xc5 .. 4" Tc8xc5 .. 3" 21.Dc2-d2 .. 19"
 Tf8-d8 .. 24" 22.f3-f4 .. 33"
 Diagramm

(Diagramm 2)

Sd5-f6 .. 12" 23.Lf1-b5 .. 25" Tc5-d5 .. 17"
 24.Dd2-e2 .. 29" Td5xd1 .. 9"
 25.Te1xd1 .. 1" Db6-c5 .. 3" 26.Kg1-g2 .. 17"
 h7-h5 .. 3" 27.De2-e3 .. 26"
 Dc5xe3 .. 7" 28.f2xe3 .. 2" d6-d5 .. 3"
 29.h2-h3 .. 4" Td8-c8 .. 8" 30.Kg2-f3 .. 2"
 Tc8-c7 .. 49" 31.Td1-d4 .. 28"
 Kg7-f8 .. 9" 32.g3-g4 .. 17" h5xg4+ .. 19"
 33.h3xg4 .. 2" Kf8-e7 .. 1"
 34.g4-g5 .. 2" Sf6-h5 .. 6" 35.c3-c4 .. 52"
 d5xc4 .. 3" 36.Lb5xc4 .. 3" Sh5-g7 .. 6"
 37.Lc4-d3 .. 23" Sg7-e8 .. 9"
 38.e3-e4 .. 1:01' Se8-d6 .. 14" 39.e4-e5 .. 14"
 Sd6-c8 .. 3" 40.b2-b4 .. 34"
 a5xb4 .. 1:14" 41.Td4xb4 .. 2" Ke7-d8 .. 21"
 42.a4-a5 .. 47" Sc8-e7 .. 10"
 43.Ld3-e4 .. 10" Kd8-c8 .. 10" 44.Kf3-e3



.. 10" Se7-c6 .. 24" 45.Le4xc6 .. 58"
 Tc7xc6 .. 3" 46.Ke3-d4 .. 4" Kc8-c7 .. 1"
 47.Tb4-c4 .. 27" Kc7-d7 .. 1:08'
 48.Tc4xc6 .. 53" Kd7xc6 .. 3" 49.Kd4-c4 .. 1"
 b7-b6 .. 2" 50.a5-a6 .. 33" b6-b5+ .. 1"
 51.Kc4-b4 .. 1" Kc6-b6 .. 1"
 52.a6-a7 .. 1" Kb6xa7 .. 1" 53.Kb4xb5 .. 1"
 Diagramm



½-½